



## Infrastructure

Engineering and consulting solutions for the entire life cycle of infrastructure assets

Antea Group

Understanding today.  
Improving tomorrow.

[www.int.anteagroup.com](http://www.int.anteagroup.com)

  
antea<sup>®</sup>group



# Improving societal development with engineering and consulting solutions for the entire life cycle of your infrastructure assets

Roads, railways, airports, ports, pipelines, are essential components of the logistics chain and of the economy, allowing the movement of people and goods between different locations. There are many challenges involved in the correct conception, design and operation of infrastructure networks, but there is undoubtedly a common link between all of them: they must be considered as a service to citizens in general and to their users especially. As such, we do not only consider the specific requirements of the asset, but also the requirements associated with mobility: safe, clean, efficient and socially, connected, climate-resilient, environmentally and financially sustainable infrastructure.

The Antea Group's multidisciplinary teams can address all areas of specialization. Our understanding of infrastructure as a service enables us to provide our clients with comprehensive solutions covering the entire life cycle of an asset.

## Engineering and consulting for the entire life cycle of your infrastructure

- > (Pre-)Feasibility
- > Maintenance and asset management
- > (Concept and detail) Design engineering
- > Masterplans
- > Inspections, technical calculations
- > Modelling
- > Augmented reality, virtual reality system
- > Stakeholder management
- > Cost estimates and life cycle analysis
- > 3D design & BIM applications
- > Risk management
- > Procurement management
- > Tender support
- > PPP\* structuration
- > Asset management
- > Independent engineering

\* PPP: Public-Private Partnership



## CABLES

- > (Pre-)Feasibility route investigation
- > Permit and detailed design

## PIPELINES

- > Pipelines for clean water, sewage, gas, brine, etc.
- > Conceptual design, tracing
- > Agreements with land owners and local authorities
- > Permit design and detail design
- > Supervision on site, Owner's Engineer role



## GEOTECHNICS

- > Versatile geotechnical expertise
- > Managing subsoil risks
- > Investigating and summarizing
- > Designing and evidencing
- > Innovative methods

## CIVIL AND UNDERGROUND STRUCTURES

- > Stationary concrete bridges and viaducts
- > Movable bridge designs
- > Locks, dams, dikes
- > Underpasses and other underground structures



## AIRPORTS

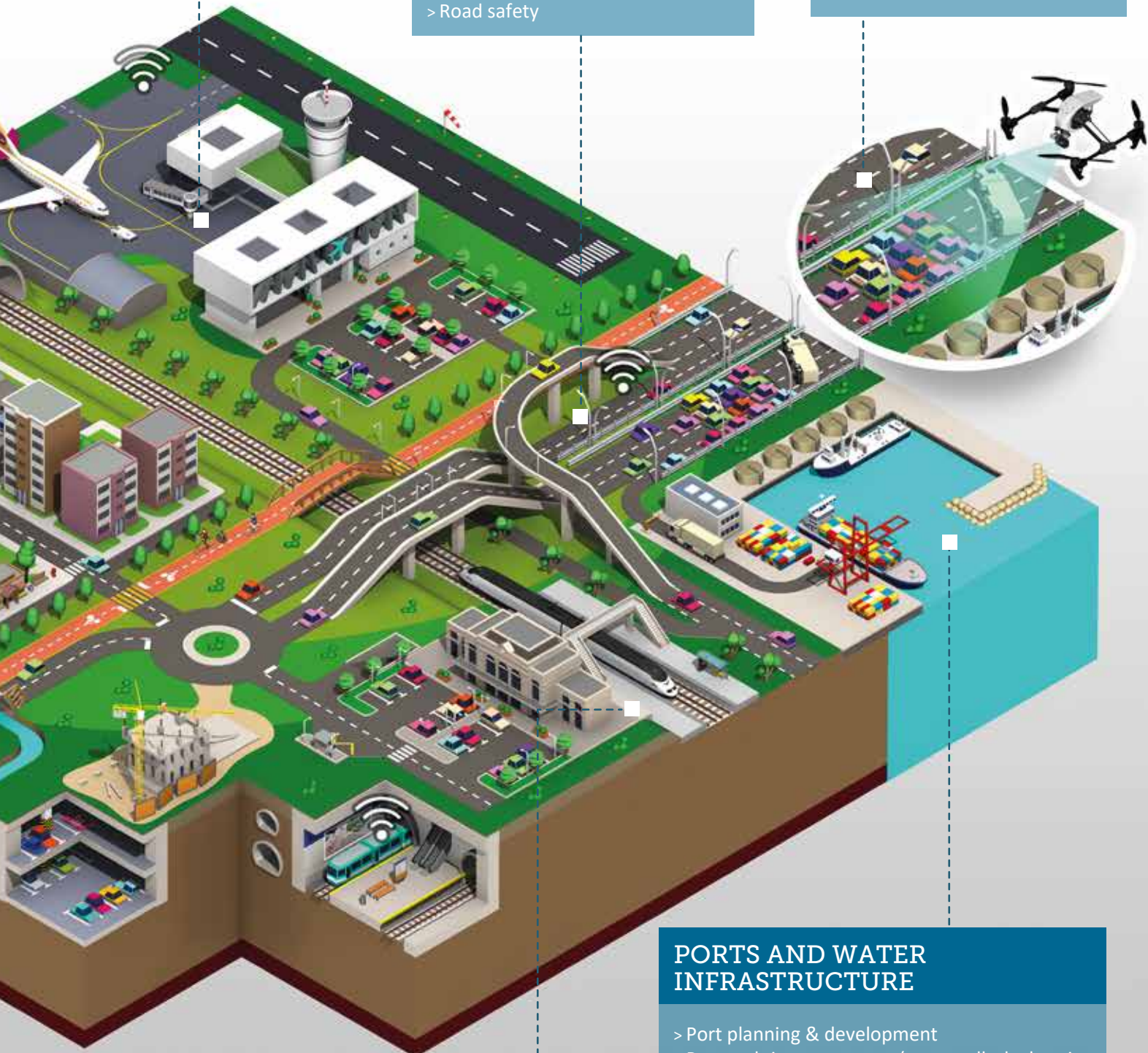
- > Airport Infrastructure: airfields and landfills
- > Energy efficiency
- > Surface water and process water
- > Geotechnics for airports
- > Environmental management

## ROADS, HIGHWAYS, CYCLING INFRASTRUCTURE

- > Interurban roads and urban roads
- > Reserved platforms for bikes and for public transport
- > Performance based contracts
- > Asset management
- > Road safety

## TRAFFIC, MOBILITY & INTELLIGENT TRANSPORT SYSTEMS

- > Data collecting
- > Modelling and forecasting
- > Integrated mobility plans
- > Public transport systems
- > Logistics plans



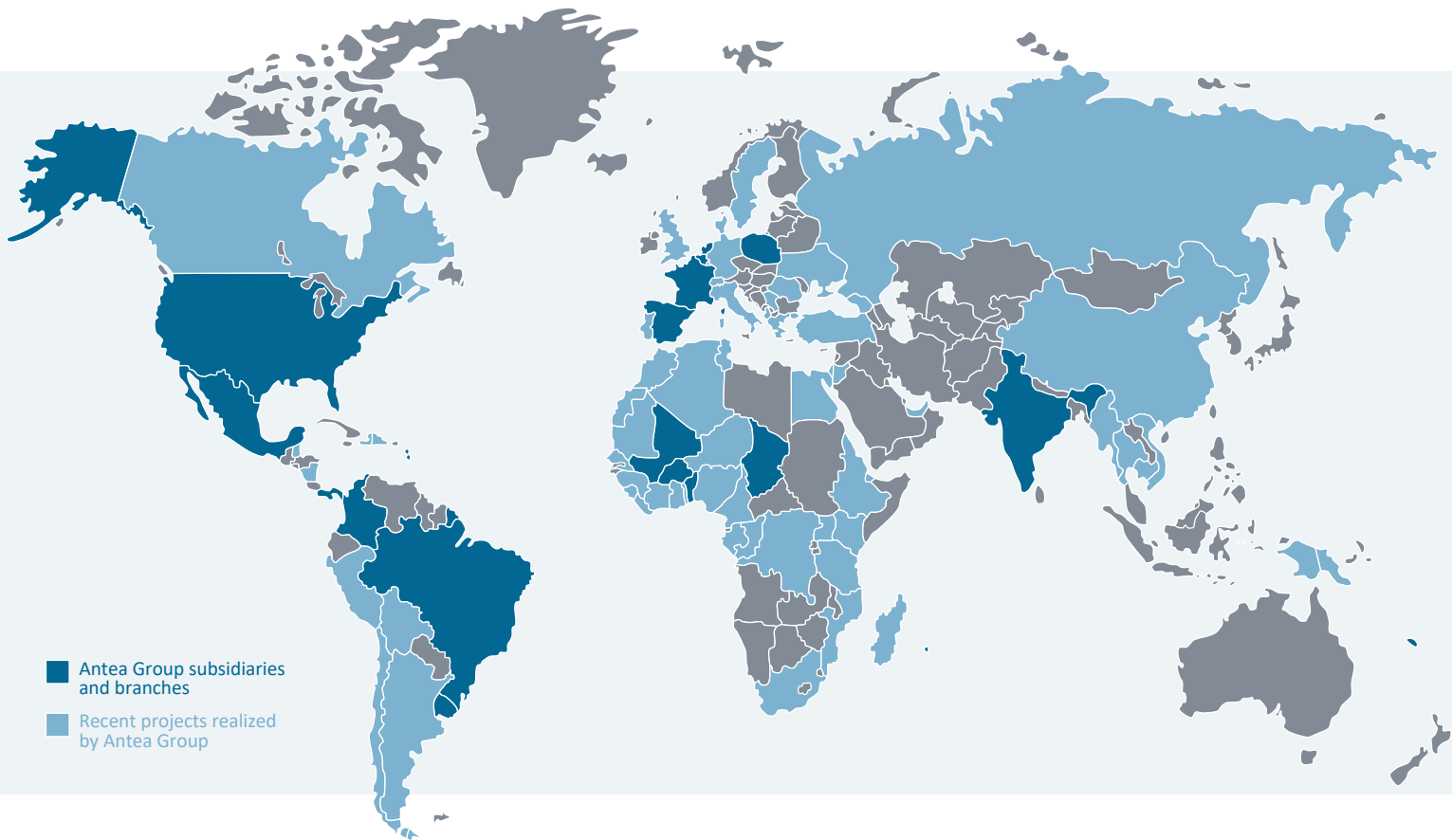
## RAILWAYS, RAILWAY STATIONS AND METRO

- > Design and renewal of track and corridor elements
- > Design and renewal of rail-carrying infrastructure
- > Design and renewal of station areas
- > Geotechnics and tunneling
- > Support in stakeholder and permit management

## PORTS AND WATER INFRASTRUCTURE

- > Port planning & development
- > Port and river structures (quay walls, locks, piers, docks, dams, dikes)
- > Dredging & sediment management
- > Marine numerical modeling
- > Logistic port areas and hinterland connectivity
- > Water and wastewater infrastructure

# GLOBAL INTEGRATED ENGINEERING AND CONSULTING PLAYER



Contact us to learn more about our references around the world.

## ABOUT ANTEA GROUP

As an international engineering and environmental consulting firm, Antea Group specializes in full-service solutions in fields of infrastructure, water, environment and urban planning.

We combine strategic thinking and multidisciplinary perspectives with technical expertise and pragmatic action to effectively solve client challenges while delivering sustainable results for a better future.

With more than 3,200 employees in over 90 offices around the world, we have established trustworthy relationships with a wide range of customers for more than 70 years : private companies, international industries, International Financial Institutions, municipalities, local and national public authorities.



### ANTEA GROUP

Learn more about our services and references for infrastructure, water, environment, urban planning and reach our experts in your country :

[www.int.anteagroup.com](http://www.int.anteagroup.com)



**OVER 3200**  
EMPLOYEES



**90** OFFICES



**# 30 OF TOP 200**  
ENVIRONMENTAL  
FIRMS\*

\* 2018 ENR- Engineering News Records